



WISEWOMAN UPDATE

May 2003

Appointments

We recommend that for all lifestyle contacts you have with a woman, whether by telephone or face-to-face, you schedule her next appointment when you have the woman with you.

That way, she knows when the next contact will be because she leaves with the date and time of her next appointment in hand.

We even recommend this for telephone contacts.

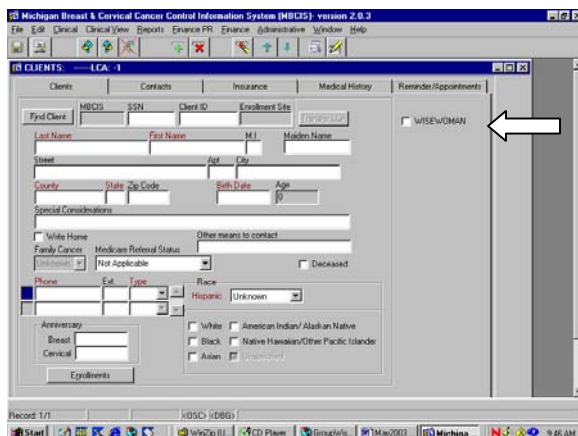
Incentives

We hope the women are enjoying the incentives and view them as motivation to meet their lifestyle goals. If you are running low on the incentives and need more, please contact Patty Ferry at (517) 335-9966 or ferryyp@michigan.gov with the type and number of incentives you would like to receive.

WISEWOMAN Box

Please remember to check the WISEWOMAN Box in MBCIS for all women who participate in the WISEWOMAN Program. WISEWOMAN

Checking the box not only informs Nationwide that the client participates in the WISEWOMAN Program, but also that they can reimburse the client's providers for the WW services.



Health History and Healthy Lifestyle Assessment Forms

Please remember to review both the Health History and Healthy Lifestyle Assessment Forms to ensure that only one answer is selected.

If the woman selects more than one answer, please ask her to choose the one answer that most applies to her.

If more than one answer is selected, we are unable to record the woman's health information in our database and, as a result, cannot provide the CDC with accurate program statistics.

Carbon Forms

Please make sure to press hard when writing on the carbon forms so that all copies are legible.

The forms containing carbon copies include:

- Health History Form
- Healthy Lifestyle Assessment Form
- Screening Form
- Lifestyle Counseling Intervention Encounter Form
- Lifestyle Contract
- Referral For Medical Evaluation

We have had difficulty reading some of the forms because the writing is barely visible on the copies.

Thank you for your assistance with this matter.

MBCIS ID Numbers

When recording the women's MBCIS ID Numbers, please verify that the numbers are accurate on the following forms:

- Health History Form
- Healthy Lifestyle Assessment Form
- Screening Form
- Lifestyle Counseling Intervention Encounter Form
- Medical Care Case Management Information Form

We have had several forms contain incorrect MBCIS ID Numbers for the WISEWOMAN clients.

