

Speaker Information



Renee B. Canady, PhD, MPA

Chief Executive Officer

**Michigan Public Health Institute
(MPHI)**

517-324-8300

Info@mphi.org

Area(s) of expertise:

Health Equity, Health Disparities, Social Justice

Short Bio/Description of expertise

Renee Branch Canady, PhD, MPA serves as Chief Executive Officer (CEO) of MPHI a Michigan-based and nationally engaged public health institute. Prior to joining MPHI in 2014, Canady served as Health Officer/Director of Ingham County Health Department, located in Lansing, Michigan. Canady has held faculty and leadership positions within the College of Nursing and the College of Medicine, Division of Public Health at Michigan State University where she currently teaches the course Health Equity for Public Health Practitioners.

Renee is a nationally recognized thought leader on health inequities, cultural competence, and social justice. She was instrumental in establishing the Healthy Heartlands initiative, a partnership of local public health professionals and community organizers partnering to impact the social determinants of health and the MI Power to Thrive, a statewide collaboration of organizers and public health practitioners.

Renee currently serves on numerous advisory boards including the Scientific Advisory Group for the RWJF County Health Rankings, the National Network of Public Health Institutes (NNPHI), and the National Health Equity Index Advisory Committee

Most Recent Speaking Engagements

1. **Power, People, Purpose: Partnering for Equity**, Colorado Department of Public Health and Environment, Office of Health Equity, Pueblo, CO – April 30, 2018
2. **Advancing Equity in Community & With Community**, Vermont Care Partners Annual Conference, Burlington, VT – April 14, 2018
3. **Building Relationships Across Difference: A Health Equity Opportunity**, Midwest Genetics Network and the Inborn Errors of Metabolism Stakeholder Group, Lansing, MI – October 17, 2017
4. **Embracing Community Through a Health Equity Lens**, Wisconsin Public Health Association, Wisconsin Dells, WI – May 24, 2017
5. **Health Equity and Social Justice Skill Building Workshop**, Association of Maternal and Child Health Programs (AMCHP), Kansas City, MO – March 4, 2017



Dr. Gail C. Christopher, DN

Founder

Ntianu Center for Healing and Nature and Chari of the Board of Trust for America's Health, Fellow, National Academy of Public Administration

(855) 456-2300

ntianucenter@gmail.com

Area(s) of expertise

Social determinants of wellbeing; health equity; prevention; racial healing; racial equity; maternal and child health; integrative medicine

Short Bio/Description of expertise

Dr. Gail C. Christopher is an award winning social change agent and former Senior Advisor and Vice President of the W. K. Kellogg Foundation (WKKF), one of the world's largest philanthropies.

She is the visionary for and architect of the WKKF led Truth Racial Healing and Transformation (TRHT) effort for America. TRHT is an adaptation of the globally recognized Truth and Reconciliation Commission (TRC) model. TRHT evolved from the decade long WKKF America Healing, racial equity and racial healing initiative, designed and led by Dr. Christopher. Over the last ten years she has had responsibility for several other areas of foundation programming. These include, Food, Health and Well-Being, Leadership, Public Policy, Community Engagement and place-based funding in New Orleans and New Mexico.

In August of 2017, Dr. Christopher left her leadership position with WKKF to launch the Maryland based Ntianu Center for Healing and Nature; and to devote more time to writing and speaking on issues of health, racial healing and human capacity for caring. She is currently Chair of the Board of the Trust for America's Health and a Fellow of The National Academy of Public Administration.

Most Recent Speaking Engagements

1. ***Equity and Healing: Integrative Approaches to Bridging Racial and Socioeconomic Disparities in Health Care., Racial Healing: The Heart of Health Equity***, Keynote, 7th Annual Integrative Medicine for the Underserved Conference, Chicago, IL – August 25, 2017
2. ***Truth, Racial Healing and Transformation***, Keynote, ROSE Breastfeeding Summit, New Orleans, LA – August 23, 2017
3. ***Environmental Justice: Truth, Racial Healing and Transformation***, Keynote, Children's Environmental Health Symposium: Environmental Justice and Children, Sacramento, CA – April 26, 2017
4. ***Recognizing the Power of Collaborations to Achieve Better Health Outcomes***, Keynote, The College of Pharmacy at Xavier University of Louisiana 10th Health Disparities Conference Advances in Evidence-Based Practices to Eliminate Disparities and Achieve Health Equity in Building Healthier Communities: Lessons Learned, New Orleans, LA – March 17, 2017
5. ***The Current Political Climate and Racial Divide in the Country and How it Relates to Truth, Racial Healing and Transformation***, Keynote, National Collaborative for Health Equity Conference and Action Lab, Detroit, MI – November 10, 2016



Denise Evans, MM, MA

Project Coordinator

Strong Beginnings, a Healthy Start Program

(616) 818-6332

Denise.evans@spectrumhealth.org

Area(s) of expertise

Bias; cultural intelligence; community engagement; equity

Short Bio/Description of expertise

Denise Evans is a trained facilitator on health equity and social justice, Institutes for Healing Racism, Cultural Intelligence (CQ), and unconscious/implicit bias. Ms. Evans works closely with state and local health departments, Spectrum Health’s Inclusion and Diversity team, and serves on the National Association of County & City Health Officials (NACCHO) Health Equity Social Justice Advisory Group. She is a guest lecturer for Grand Rapids Community College, Calvin College, Grand Rapids Theological Seminary, Grand Valley State University and Michigan State University and is a National Equity Project (NEP) Fellow. Denise is a trained community organizer who helps provide leadership for the Michigan Power to Thrive movement (state & local levels) - joining community organizers and public health professionals to build a more equitable future for those living in our nation’s most vulnerable communities. Evans is the past chair of Spectrum Health’s System Inclusion Council, a founding member of the Greater Grand Rapids Racial Equity Network (GGRREN), and was a planning team member for the Healthy Heartlands Building Bridges to Health Equity initiative. She is the director of Kingdom Life Ministries Community Development Corporation, serves on the boards of Safe Haven Ministries, The Deborah House, and Women in the NAACP (WIN).

Most Recent Speaking Engagements

1. **Racial & Ethnic Approaches to Community Health**, Presenter, Facilitator, & Panel Moderator (REACH) Summit – equity, community collaboration and engagement, trust building – December 8, 2017
2. **Community Engagement & Client Enrollment – Focus on Cross-Cultural Engagement**, Presenter/Panelist Michigan Department of Community Health’s Perinatal Learning Collaborative – December 1, 2017
3. **Developing Community Trust & Agreements, Implicit Bias, Levels of Oppression**, Presenter/Co-lead Health Equity Social Justice (HESJ) Dialogue Workshop (2-day) – November 2 & November 7, 2017
4. **Implicit Bias, Equity/Inequities in Health and Education, Group Facilitation**, Presenter/Facilitator, National Equity Project’s Leading for Equity 3-day Training – October 26 – October 28, 2017
5. **Resilience, Implicit Bias, Health Disparities, and Health Equity**, Presenter, Baltimore Birth Resilience Symposium – October 25, 2017



Hunter Genia

989-944-3117

Hunter.genia@yahoo.com

Area(s) of expertise

Speaker, Trainer, Facilitator on Native American - health, cultural, behavioral health, health disparities, social justice, historical trauma, social work, advocacy

Short Bio/Description of expertise

A Saginaw, Swan Creek and Black River Band of Chippewa and Grand River Ottawa Native American who graduated from Grand Valley State University with his MSW. Has professionally served his Native American population since 1990. Prevention, Case management, social work and behavioral health administration has helped develop prevention programs, outpatient and treatment programs that are culturally appropriate. A trainer, facilitator, and presenter on tribal social justice issues, historical trauma and resilience, and history. Has presented to many social work, health organizations, university settings, and tribes to create awareness.

Most Recent Speaking Engagements

1. **Michigan Department of Civil Rights** - Historical Trauma
2. **Grand Valley State University** – Native American Heritage Month
3. **Central Michigan University** – Native American Radio Show on Current Issues and Topics
4. **Grand Valley State University – Social Work Department** – (Hot topics – CEU's)
5. **Gun Lake Tribe** – Historical Trauma and Resilience



Lauren Hamel, PhD

Assistant Professor,
Department of Oncology,
Populations Studies and
Disparities Research Program

**Barbara Ann Karmanos Cancer
Institute/Wayne State
University**

(313) 576-9672
hamell@karmanos.org

Area(s) of expertise

Racial differences in patient-physician communication; racial attitudes and verbal/nonverbal communication; minority accrual to clinical trials; financial toxicity due to cancer treatment

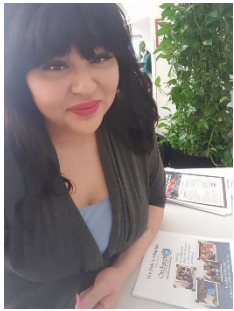
Short Bio/Description of expertise

Dr. Hamel is an Assistant Professor in the Department of Oncology and a Scientist in the Population Studies and Disparities Research Program at Wayne State University School of Medicine and the Barbara Ann Karmanos Cancer Institute. Dr. Hamel studies various aspects of patient-physician communication and its influence on treatment decisions and other health-related outcomes. She also studies the financial consequences of cancer treatment and its influence on cancer patients and survivors. Dr. Hamel's research is supported by grants from the National Institute of Minority Health and Health Disparities, the National Cancer Institute, and the Blue Cross Blue Shield of Michigan Foundation.

Dr. Hamel received her PhD in Communication from Michigan State University. She completed postdoctoral fellowships in Organizational Behavior at the Business School of Dublin City University in Ireland and in Communication and Behavioral Oncology at Wayne State University in Detroit.

Most Recent Speaking Engagements

1. ***Innovation, Disruption, Opportunity Talk (A Patient App to Prompt Treatment Cost Discussions)*** for Wayne State University's Innovation Hub Launch, Detroit, MI. **Hamel LM** – November 2017
2. ***Nonverbal convergence mediates racial attitudes and outcomes in racially discordant oncology interactions.*** Podium Presentation, International Conference on Communication in Healthcare and Health Literacy Research Conference, Baltimore, MD. **Hamel LM**, Manning MA, Penner LA, Chapman R, & Albrecht TL. – October 2017
3. ***Development of a patient communication intervention to improve clinical trial enrollment among black and white men with prostate cancer.*** Podium Presentation, International Conference on Communication in Healthcare and Health Literacy Research Conference, Baltimore, MD. **Hamel LM**, Penner LA, Heath E, Lansey D, Carducci M, Albrecht TL, Barton E, Manning MA, Wojda M, & Eggly S. – October 2017
4. ***Racial attitudes and nonverbal convergence in racially discordant oncology interactions.*** Podium Presentation, Society of Behavioral Medicine, San Diego, CA. **Hamel LM**, Manning MA, Penner LA, Chapman RA, Albrecht TL, & Eggly S. – March 2017
5. ***Racial attitudes and nonverbal convergence of patients and physicians in oncology interactions.*** Podium Presentation, International Conference on Communication in Healthcare, Heidelberg, Germany. **Hamel LM**, Manning MA, Penner LA, Chapman RA, Albrecht T, & Eggly S. – September 2016



Lilianna Angel Reyes, MPA, TTS

Interim Executive Director

Affirmations

(248) 398-7105

lreyes@goaffirmations.org

Area(s) of expertise

Systems Change Agent, Diversity and Inclusion Expert, Education and Training Specialist

Short Bio/Description of expertise

Lilianna Reyes is the Interim Executive Director of Affirmations and a Latina trans, woman of color that leads holistic approaches to reduce cancer.

Most Recent Speaking Engagements

1. ***LGBTQ+ and Tobacco Issues*** at the Michigan Primary Care Association LGBTQ Health Summit, Frankenmuth, MI - June 2018
2. ***LGBTQ+ Health Issues with those living with HIV***, Detroit Public Health Department's Housing HIV Program, Detroit, MI - June 2018
3. ***LGBTQ+ Health Issues***, Macomb County Health Department, Macomb, MI -June 2018
4. ***LGBTQ+ Health and Chest Feeding***, St. John's Hospital, Detroit, MI - June 2018
5. ***LGBTQ+ Youth and Health Issues***, Judson Center, Detroit, MI - June 2018



Shani Saxon, LMSW

Executive Director,
Psychotherapist

Turning Corners Consulting, Inc

(517) 256-9897
turningcornerscc@gmail.com

Shani Saxon, LMSW (con't)

Executive Director,
Psychotherapist

Turning Corners Consulting, Inc

(517) 256-9897
turningcornerscc@gmail.com

Area(s) of expertise

Health Equity; Social Justice; Complex Trauma; Generational Trauma

Short Bio/Description of expertise

Shani Saxon, LMSW is the owner and clinical provider of Turning Corners Consulting, Inc. where she provides consulting services and counseling to individuals, agencies and groups. She also owns and operates Kids Turning Corners, Inc, a non-profit that provides emotional and behavioral support to adolescents and college students by addressing social justice, leadership and emotional intelligence. In partnership with One Love Global, a local non-profit that is committed to peace, justice and racial equity, Shani is a field instructor for Michigan State University, the University of Michigan, and Wayne State University- Schools of Social Work where she provides supervision to undergraduate and graduate students who are learning about policy through the My Brother’s Keeper (MBK) initiative. Shani’s research interests include focusing on the disparities of mental health accessibility and experiences of Black women with severe mental health diagnoses. Shani is currently working on a research project with Dr. Marya Sosulski, gathering the life histories of Black women living with serious mental health illnesses. Shani currently contracts with two summer bridge programs, Upward Bound and the Engineering Science Success Academy (ESSA), instructing social justice and emotional wellbeing seminars to incoming minority students making the transition from high school to college.

Most Recent Speaking Engagements

- 6. **Trauma & Healing: Discussion about transgenerational trauma and the impact on people of color with community leaders from the MBK Communities across Michigan.** My Brother’s Keeper Summit, Lansing Community College, Lansing, Michigan – 2017
- 7. **Holistic leadership and emotional intelligence for diverse students of color in high school and college that aim at eliminating mental health disparities,** seminar presenter, Uplift Our Youth Foundation: Echoes of Success. Lansing, Michigan – 2017
- 8. **Addressing emotional and mental health issues by defining what systemic power imbalances are in education, environment and community for students of color.** Reality Ride Seminar at Michigan State University, College of Engineering-DPO, East Lansing, Michigan – 2017
- 9. **Healing Racial Violence: The Power of Consciousness and Communication at Michigan State University.** Understanding the origins of racial conflict and trauma from a human services perspective, allies within our community will be able to assist in addressing privilege and oppression, and address and acknowledge hate crime concerns while promoting equal opportunity efforts that help communities, public agencies, businesses, and schools prevent or eliminate illegal discrimination, bias, and unfair practices. Michigan State University, East Lansing, Michigan – 2017



Jacqueline Thomas-Hall

Senior Director, Diversity and Inclusion

Beaumont Health

(248) 423-2445

Jacqueline.thomas-hall@beaumont.org

Area(s) of expertise

Diversity, training and development

Short Bio/Description of expertise

As a system executive leader of Diversity & Inclusion, Ms. Thomas-Hall is responsible for setting the strategic direction and leadership for programs and initiatives for Beaumont Health. Jacqueline has presented at both local and national conferences including the University of St. Thomas' continuing education program, "The Multicultural Diversity Forum, National Multicultural Training Institute Conference, (NMCI) Society for Human Resource Management (SHRM) Global Chapter (Galway, Ireland), Lansing Chapter of SHRM and other local agencies.

Past employers include, The Pillsbury Company, General Mills, Medtronic Inc. and Kraft Food. Jacqueline graduated from the University of Kansas with a BA (1984) in psychology and completed her MBA (2009) from the University of Phoenix.

During her tenure at Sparrow Health System, she was instrumental in their approach to equity and established key indicators and metrics for the organization. She started key programs such as mentoring, system-wide CEO-led diversity council and established Sparrow's diversity outreach initiatives.

At Medtronic Inc., a medical device company, she led the emergence of Employee Resource Groups and helped them to be fully leveraged on both the national and global levels of the organization.

Ms. Thomas Hall's success is predicated on authentic leadership, her ability to develop relationships, provide leadership and guidance while helping operational leaders understand the "how to" while continuing to help executives connect the head, heart and hand of diversity and inclusion management.

Most Recent Speaking Engagements



Regina R. Washington, DrPH

Director

**LGBT HealthLink, a program of
CenterLink**

(954) 388-0624

regina@lgbtcenters.org

Area(s) of expertise

Public health; cancer (colorectal) health disparities; health equity; program planning and development; community practice; leadership and systems; cultural competency

Short Bio/Description of expertise

Regina R. Washington, DrPH, is working toward eliminating health disparities within LGBT communities as it relates to tobacco cessation and cancer control.

Dr. Washington has over 15 years of combined experience in community, governmental, and academic institutional leadership related to strategic planning, program/policy development, implementation, and evaluation. Her presentations, projects, and writings have focused on health disparities, health education, and health policy, specifically related to tobacco cessation and cancer control. Her public health practice focuses on geographic, social, and behavioral factors associated with cancer health disparities among low socioeconomic status, minority racial/ethnic, and other disadvantaged populations.

Most Recent Speaking Engagements

1. **Cancer Health Disparities in LGBT Communities and Benefits of Patient Navigation** – Departments of Health, Cancer Support Organizations – 2017
2. **Best Practices for Tobacco and Cancer Control** – Departments of Health, Area Health Education Centers, Gilda’s Club, Comprehensive Cancer Control Coalitions – 2017
3. **LGBT Cultural Competency** – Departments of Health, Area Health Education Centers, Gilda’s Club, Comprehensive Cancer Control Coalitions – 2017
4. **Sexual Orientation and Gender Identity (SOGI) Data Collection Best Practices** – North American Quitline Consortium, Departments of Health, Healthcare Systems, Community-based organizations – 2017



Marcella Wilson, PhD

CEO & Founder

Transition to Success, LLC

(313) 580-2672

mwilson@tts-llc.org

Area(s) of expertise

Social determinants of health; poverty; social justice; speaker; author

Short Bio/Description of expertise

Marcella Wilson, Ph.D., has over 30 years of extensive experience in healthcare administration, not-for-profit management, behavioral health, criminal justice and public sector programming. Dr. Wilson, a University of Michigan alumnus, holds a Master’s degree in Social Work and a Ph.D. in Health and Higher Education. Dr. Wilson is an Emmy Award winner for the “WRUFightn4” documentary promoting youth volunteerism. In her role as President and Found of Transition to Success™, Wilson is leading a national social change movement with a standard of care to treat poverty as an environmentally based medical condition. “Diagnosis: Poverty,” Dr. Wilson’s newly published book, defines a scalable, sustainable, measurable, multi-generational response to poverty.

Transition to Success™, recognized as a Clinton Global Initiative, brings uniform protocols and analytics across human services, healthcare, education, government and faith based programs.

Most Recent Speaking Engagements

1. **Fundamentals of Poverty & Health, An Epidemiologic Approach** – Advocate Health Symposium, Chicago, IL – November 15, 2017
2. **A Standard of Care to Treat the Social Determinants of Health** – Michigan Cancer Consortium Annual Meeting, Lansing, MI – November 8, 2017
3. **Diagnosis of and Addressing Poverty** – American Public Human Services Assn (APHSA), National Harbor, MD – October 23, 2017
4. **DCF Work Programs Connection: A Pathway to Success**, Wisconsin Department of Children & Families, Elkhart Lake, WI – October 15, 2017
5. **An Innovative Approach to Treating Poverty in our Community** - Catholic Charities of Northern Kansas, Salina KS – October 3, 2017